



OPERATING INSTRUCTIONS | DIGITAL-TO-ANALOG CONVERTER

EL DAC

SUPPORT

ONLINE

CONTACT@JDSELABS.COM
JDSELABS.COM/SUPPORT

BY PHONE

314-252-0936
9:30AM-6PM CST,
MONDAY THROUGH FRIDAY

BY MAIL

909 N BLUFF RD
COLLINSVILLE, IL 62234
UNITED STATES

QUICK SETUP

Windows users, please install drivers and reboot before connecting cables. See page 5

STEP 01

Connect AC power adapter to rear power jack (16VAC), then connect to wall outlet

STEP 02

Connect cables to your desired digital audio players: USB, TOSLINK, or coaxial

STEP 03

Touch button on front to power on, then:

- Tap mode button 3x to cycle through all modes
- Tap and hold to power off

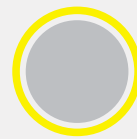
MODES



TOSLINK



USB



COAX

Your PC will only recognize the USB device while EL DAC is set to USB mode, indicated by blue light.

CONFIGURATION

CONNECTIVITY

EL DAC accepts three methods of digital input:

USB	16/44.1k thru 32/384kHz**
Coaxial S/PDIF	16/8kHz thru 24/192kHz*
TOSLINK	16/8kHz thru 24/192kHz*

Maximum RCA Output voltage is 2.0VRMS

** Many coax and optical sources are unable to reliably transmit at 192kHz.*

*** Windows 7 supports 24/192kHz maximum.*

LISTENING TIPS

For maximum signal fidelity, set the DAC to at least 24-bit audio and adjust digital volume slightly below 100% at your computer. Only control volume from your amplifier.

When using USB mode, set sampling frequency to match the majority of your music collection (i.e., use 44100 Hz for 44.1kHz). Alternatively, you may use ASIO mode in Foobar.

EL DAC automatically selects appropriate sampling rate in coaxial or optical modes.

Listen safely to conserve your hearing:
www.hearingloss.org

To ensure an optimal noise floor, always position audio equipment as far away as possible from wireless devices.

OPERATING CARE

Use gentle force when touching the mode button, and when inserting or removing cables.

SETUP

COMPUTER SETUP



Drivers must be installed for Windows XP/7/8/10 and you must reboot before connecting your EL DAC.

Please uninstall any older “Bravo-HD” audio drivers from JDS Labs or other manufacturers.

OS X Installation

No drivers are required. Proceed to Quick Setup on page 2.

Windows Installation

1. Download drivers from: www.jdslabs.com/el-dac-drivers
2. Extract the downloaded .zip file.
3. Open the extracted directory and run, “setup.exe”
4. Windows may present “Open File - Security Warning”. Proceed by clicking “Run”
5. Follow the installer prompts to complete setup.
6. If Windows Security prompts appear, check “Always trust software from ‘Savitech Corp’” and click “Install”
7. Please reboot after installation is complete.
8. Connect EL DAC as described in Quick Setup on page 2.

Windows Vista/7/8

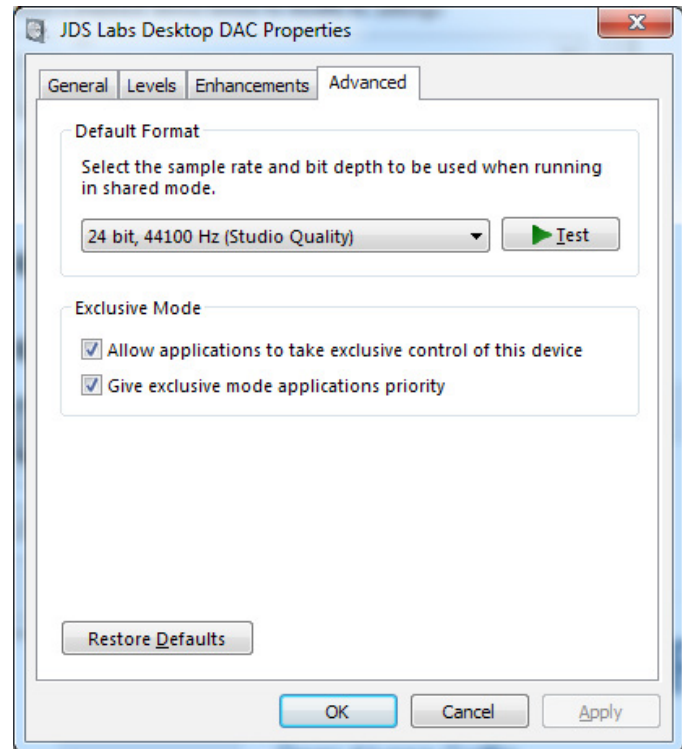
Right click volume icon in taskbar, click Playback Devices, set JDS Labs EL DAC as default device.

Suggested Properties (right click JDS EL DAC “Speakers” icon):

- Enhancements: Check “Disable all enhancements”
- Advanced: See Listening Tips

Mac OS X

Ensure EL DAC is selected from Audio Devices



TROUBLESHOOTING

Unable to find “EL DAC” as a USB device

Cause: Wrong mode, or DAC needs to re-initialize

Solution: Tap mode button 3x to cycle through all modes.

Blue (USB) light flashes 3 times, than turns red

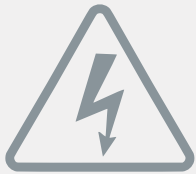
Cause: USB cable is disconnected

Solution: Connect USB cable

No sound in one channel

Cause: Bad cable, or incorrect computer settings

Solution: Check balance settings; try another headphone or RCA cable. Some Mac OS X systems will pan audio to the Left channel upon initial connection of a DAC. User must restore balance to center.



POWER ADAPTERS

ATTENTION: Incorrect power adapters can result in capacitor explosion hazards and device damage. Only use the power adapter included with your EL DAC:

Type: AC-to-AC Transformer	Output Voltage: 16 VAC
Current: Minimum 1000mA	Connector: 2.1x55.mm (ID x OD)



Application for Council Directives 2004/108/EC, 2006/95/EC, 2002/95/EC. Conformity declared for EN55022:2011, EN611000-3-2, EN61000-3-3, EN55024-2



This equipment has been tested and found to comply with the limits for a Class B digital device, pursuant to part 15 of the FCC Rules.