



OPERATING INSTRUCTIONS | DIGITAL-TO-ANALOG CONVERTER

ATOM DAC 2

SUPPORT

ONLINE

CONTACT@JDSLABS.COM
[JDSLABS.COM/SUPPORT](https://www.jdslabs.com/support)

BY PHONE

314-252-0936
9:30AM-6PM CST,
MONDAY THROUGH FRIDAY

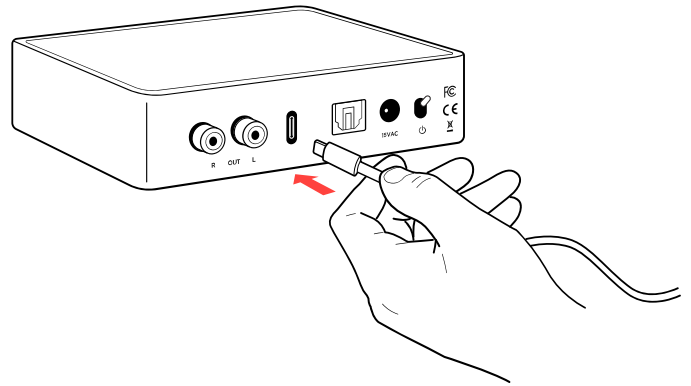
BY MAIL

909 N BLUFF RD
COLLINSVILLE, IL 62234
UNITED STATES

QUICK SETUP

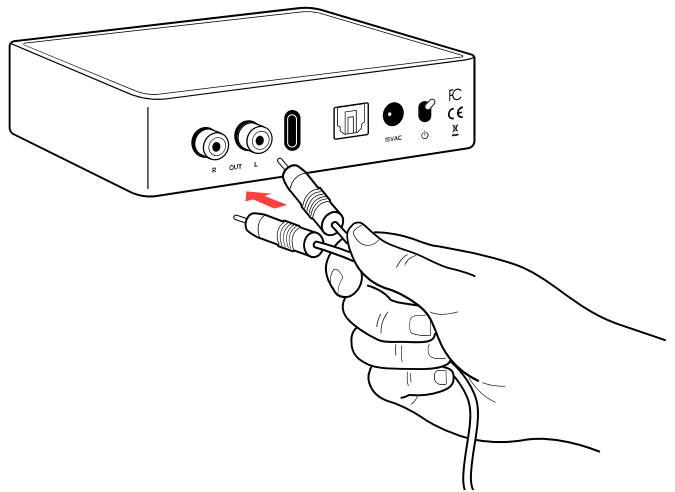
STEP 01

Connect the supplied USB cable from your PC to Atom DAC 2's USB input jack.



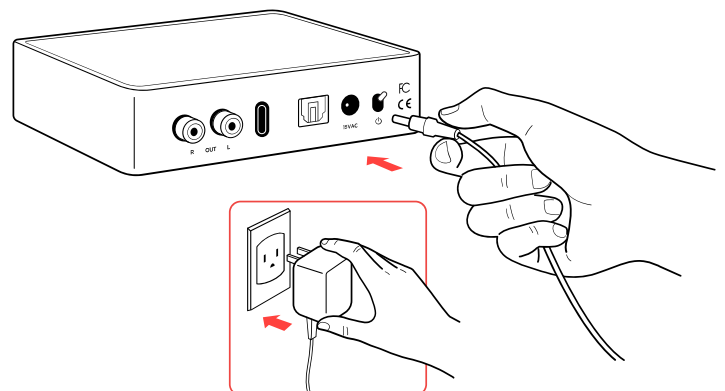
STEP 02

Connect an RCA Cable from Atom DAC 2 to your amplifier's RCA Input jacks.



STEP 03

Connect the supplied AC power adapter to the barrel power jack, then connect the adapter to your wall outlet.



CONFIGURATION

Connectivity

Atom DAC 2 accepts USB input:

USB	16/44.1k thru 32/384kHz*
-----	--------------------------

Maximum RCA Output voltage is 2.0VRMS | *Windows 7 supports 24/192kHz maximum

Listening Tips

For maximum signal fidelity, set the DAC to at least 24-bit audio and adjust digital volume slightly below 100% at your computer. Only control volume from your amplifier.

Listen safely to conserve your hearing:
www.hearingloss.org

To ensure an optimal noise floor, always position audio equipment as far away as possible from wireless devices.

Operating Care

Use gentle force when inserting or removing cables.

Set sampling rate to the highest integer multiple of your music collection. For example, use 176.4kHz for a collection of 44.1k or 88.2k or 176.4kHz files. Use 192kHz for a collection of 48k or 96k or 192k audio files. Alternatively, you may install the optional XMOS drivers in Win10 for exclusive WASAPI mode.

SETUP

Computer Setup

Atom DAC 2 requires no drivers in Windows 10, Mac OS, Linux, and modern version of iOS and Android. You may download drivers for Win7/8 from jdslabs.com/drivers. These drivers may optionally be installed in Win10 for WASAPI support. Be sure to select your new DAC as the default playback device:

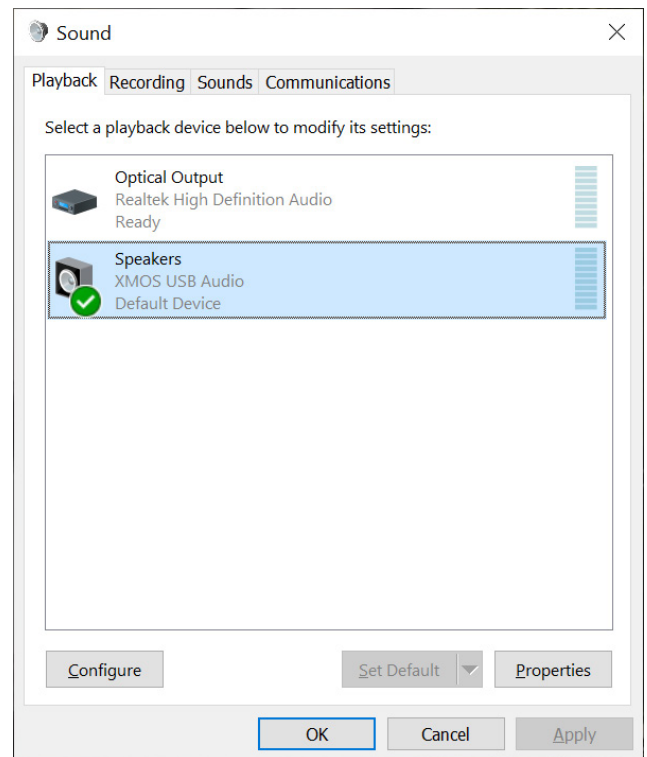
Windows 7/8/10

Right click the volume icon in your taskbar and choose Sound --> Playback. Click the XMOS or JDS Labs audio device, then choose “Set Default”. For best experience, also configure Properties:

- Enhancements: Check “Disable all enhancements”
- Advanced: See Listening Tips

Mac OS X

Ensure JDS Labs audio device is selected from Audio Devices.



Troubleshooting

No USB device or “Failed to Play Audio”

Cause: USB device is not initialized.

Solution: Disconnect and reconnect power cable to reset the USB device.

No sound in one channel

Cause: Bad cable, or incorrect computer settings.

Solution: Check balance settings; try another headphone or RCA cable. Some Mac OS X systems will pan audio to the left channel upon initial connection of a DAC. User must restore balance to center.

Audio is muted after resuming from sleep or hibernate in Windows 10

Cause: Microsoft USB Audio 2.0 driver bug.

Solution: Install XMOS drivers, as per page 5.

Light is off, but USB device is present

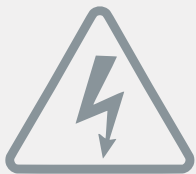
Cause: Atom DAC 2 is designed to enter standby mode after 15 minutes of inactivity.

Solution: Atom DAC 2 will wake up when audio is played.

Light is off and no USB device is detected

Cause: Rapid power cycling, or loss of power.

Solution: Disconnect power cable for at least 5 seconds to reset power state. If behavior persists, please see jdslabs.com/troubleshooting.



POWER ADAPTERS

ATTENTION: Incorrect power adapters can result in capacitor explosion hazards and device damage. Only use the power adapter included with your Atom DAC 2:

Type: AC-to-AC Transformer	Output Voltage: 15-16 VAC
Current: Minimum 500mA	Connector: 2.1x55.mm (ID x OD)



Application for Council Directives 2004/108/EC, 2006/95/EC, 2002/95/EC.
Conformity declared for EN55022:2011, EN611000-3-2, EN61000-3-3, EN55024-
2



This equipment has been tested and found to comply with the limits for a Class B digital device, pursuant to part 15 of the FCC Rules.